

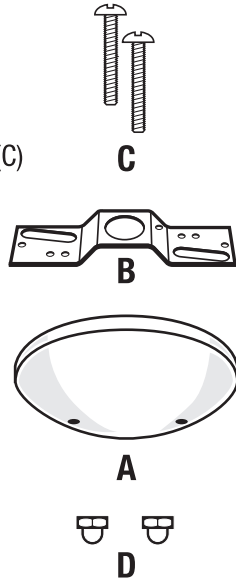
## Blank-Up Kit #60219

### What's Inside

- 1 – 5" White Blank-up Canopy (A)
- 1 – Offset Crossbar (B)
- 2 – 8-32 x 1 1/2" Mounting Screws (C)
- 2 – Brass Cap Nuts (D)

### What's Needed

- 1/2" Mounting Screws
- Wire Nuts
- Screwdriver
- Wire Insulation Stripper
- Pliers

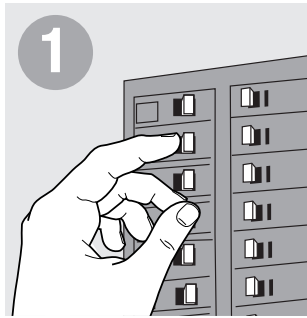


### What's Its Purpose

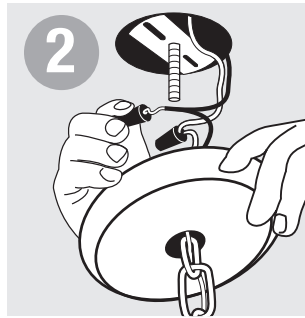
Decorative piece used to cover the outlet box after removal of an existing fixture.

### Warning

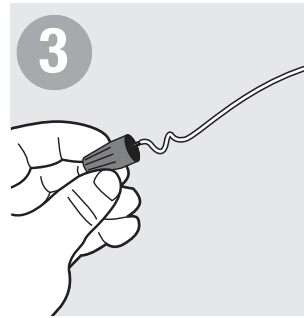
- Before beginning **TURN OFF POWER** to the light from the fuse or circuit breaker.
- Follow local electrical regulations or codes when installing and using this product.
- When installing fixture directly to outlet box, the outlet box must be capable of supporting 50 lbs. and be supported by the building structure.
- **CAUTION: RISK OF ELECTRIC SHOCK. RISK OF FIRE.**



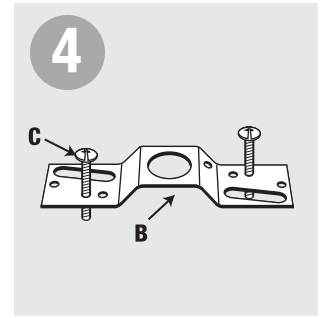
Before beginning **TURN OFF POWER** to the light from fuse or circuit breaker



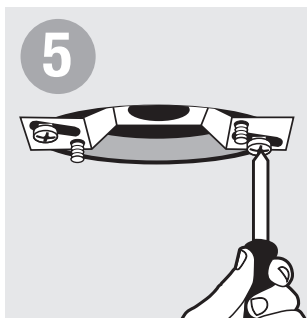
Remove fixture from outlet box.



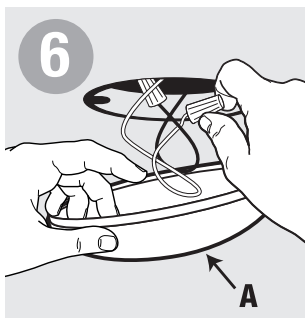
Attach wire nuts to end of each conductor wire.



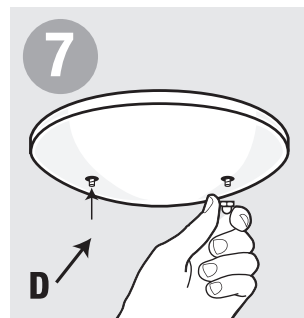
On raised side of offset crossbar (B) thread 1-1/2" mounting screws (C) down through each hole that lines up with canopy.



With raised side of crossbar towards ceiling, mount crossbar by inserting 1/2" mounting screws through slotted holes. Tighten until crossbar is flush with ceiling.



Cover with blank-up canopy (A). Make sure all wires are carefully placed inside of box and blank-up.



Secure blank-up canopy with cap nuts (D).